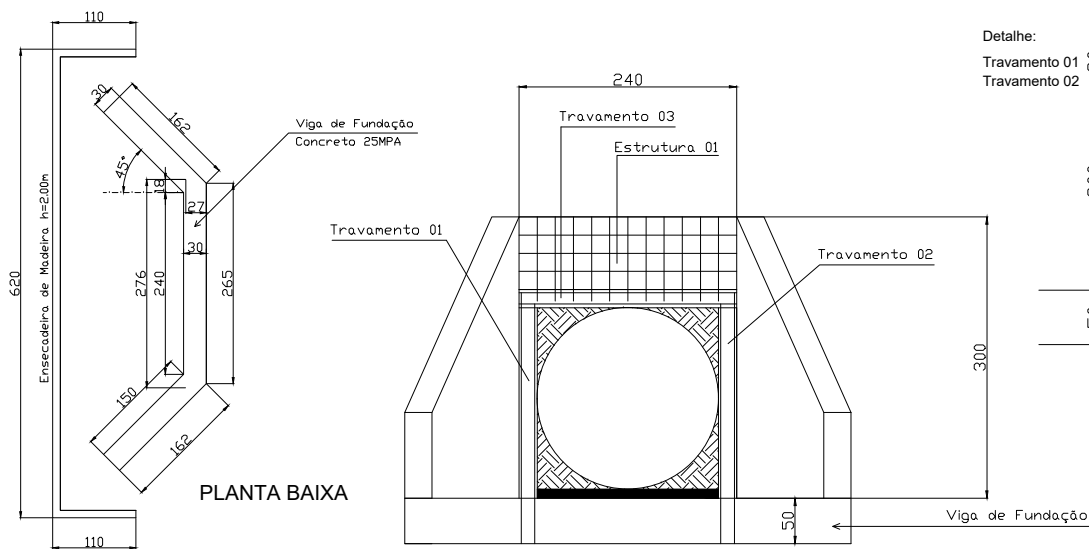


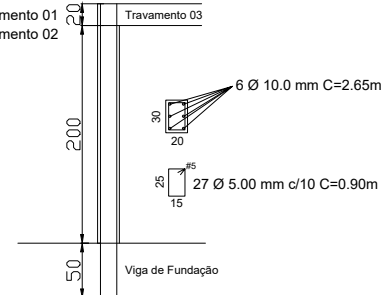
N	Ø	Agm	C (mm)	Area	Perim
1	10.0	0.617	0.40	8	3.20
2	10.0	0.617	0.50	8	4.00
3	10.0	0.617	0.60	8	4.80
4	10.0	0.617	0.70	8	5.60
5	10.0	0.617	0.80	8	6.40
6	10.0	0.617	0.90	8	7.10
7	10.0	0.617	1.00	8	8.00
8	10.0	0.617	1.10	8	8.80
9	10.0	0.617	1.20	8	9.60
10	10.0	0.617	1.30	8	10.40
11	10.0	0.617	1.40	8	11.20
12	10.0	0.617	1.50	8	12.00
13	10.0	0.617	1.60	8	12.80
14	10.0	0.617	1.70	8	13.60
15	10.0	0.617	1.80	8	14.40
16	10.0	0.617	1.90	8	15.20
17	10.0	0.617	2.00	8	16.00
18	10.0	0.617	2.10	8	16.80
19	10.0	0.617	2.20	8	17.60
20	10.0	0.617	2.30	8	18.40
21	10.0	0.617	2.40	8	19.20
22	10.0	0.617	2.50	8	20.00
23	10.0	0.617	2.60	8	20.80
24	10.0	0.617	2.70	8	21.60
25	10.0	0.617	2.80	8	22.40
26	10.0	0.617	2.90	8	23.20
27	10.0	0.617	3.00	8	24.00
28	10.0	0.617	3.10	8	24.80
29	10.0	0.617	3.20	8	25.60
30	10.0	0.617	3.30	8	26.40
31	10.0	0.617	3.40	8	27.20
32	10.0	0.617	3.50	8	28.00
33	10.0	0.617	3.60	8	28.80

Ø	Agm	C (mm)	Area
5.0	0.154	236.54	36.42
10.0	0.617	897.31	430.24



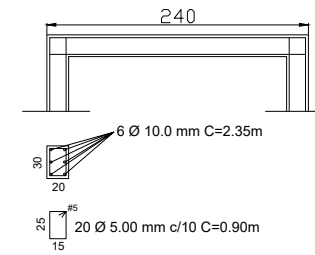
Detalhe:

Travamento 01
Travamento 02



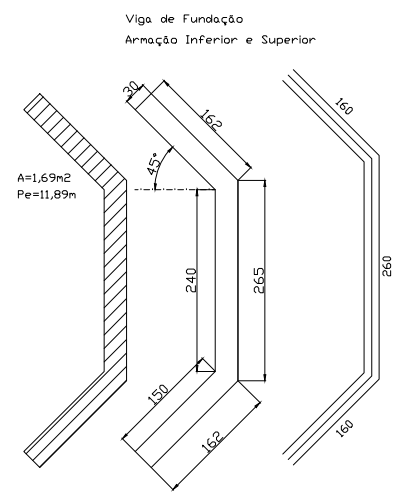
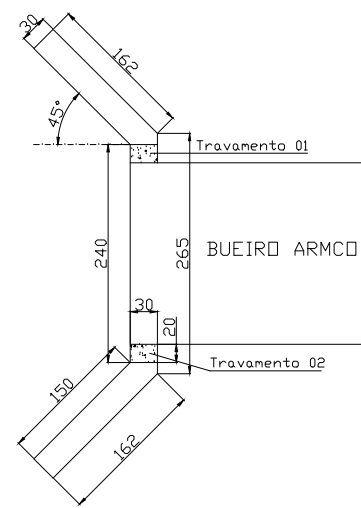
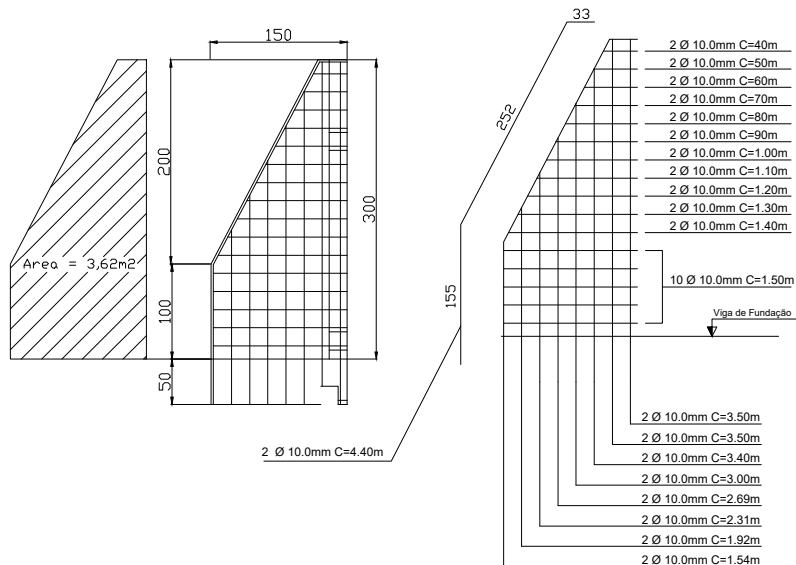
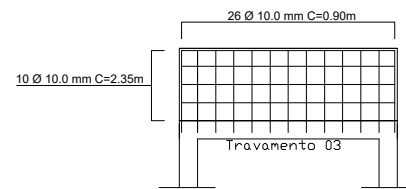
Detalhe:

Travamento 03

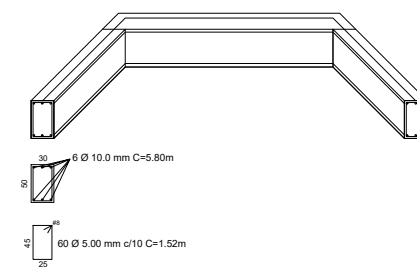


Detalhe:

Estrutura 01



Detalhamento



PROPRIETÁRIO: PREFEITURA MUNICIPAL DE CARATINGA		ENDEREÇO: CORREGO ÁGUA SANTA - DMT 12,1 KM DOM LARA		RESPONSÁVEL TÉCNICO:		PROPRIETÁRIO	
MUNICÍPIO: CARATINGA	DATA: 27/10/2025	TÍTULO: CROQUI DE LOCALIZAÇÃO DE BUEIRO DO MUNICÍPIO DE CARATINGA/MG.		WLADIMIR BARROS BARBOSA CREA : 80.052 / D		GIOVANNI CORRÊA DA SILVA PREFEITO MUNICIPAL	
Coordenadas S 19.801147 W 42.230480		FOLHA 04/04	ESCALA: INDICADA				